

Past, Present and Future The Amazing, Changing LAUSD Enrollment

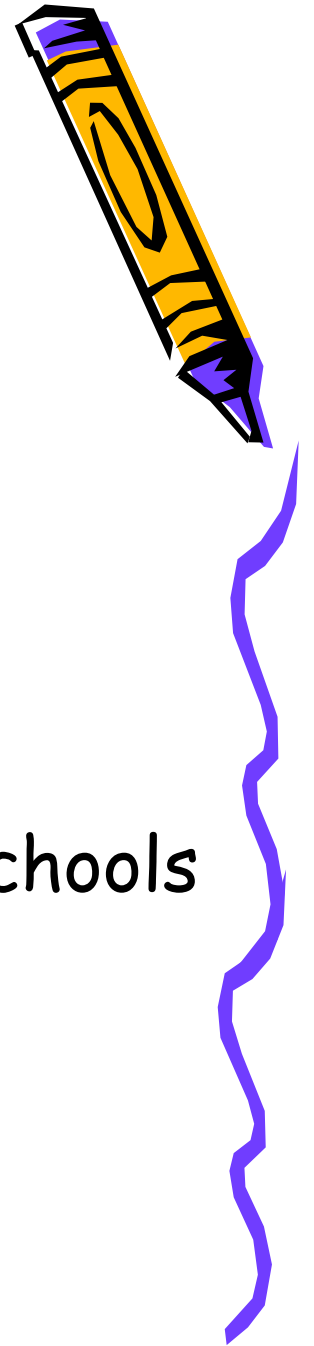
LAUSD School Construction Bond Citizens' Oversight Committee
By Facilities Division, Master Planning and Demographics



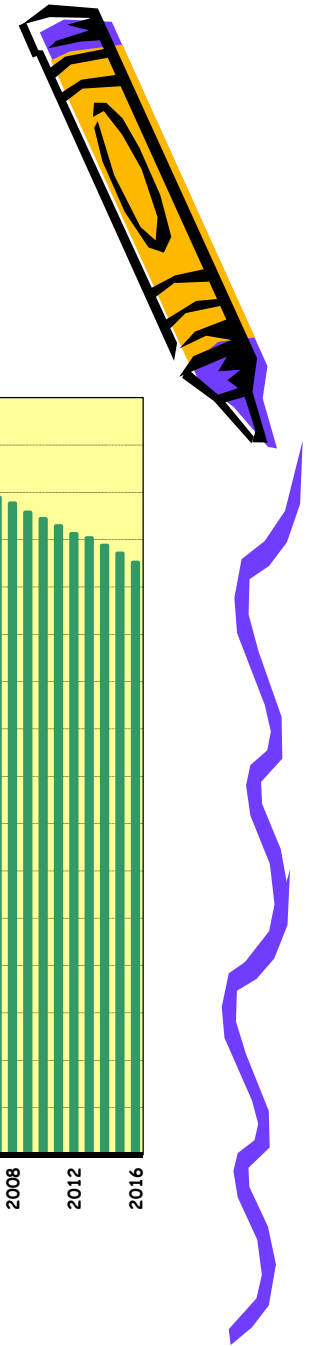
March 2, 2017

More Than Just Numbers

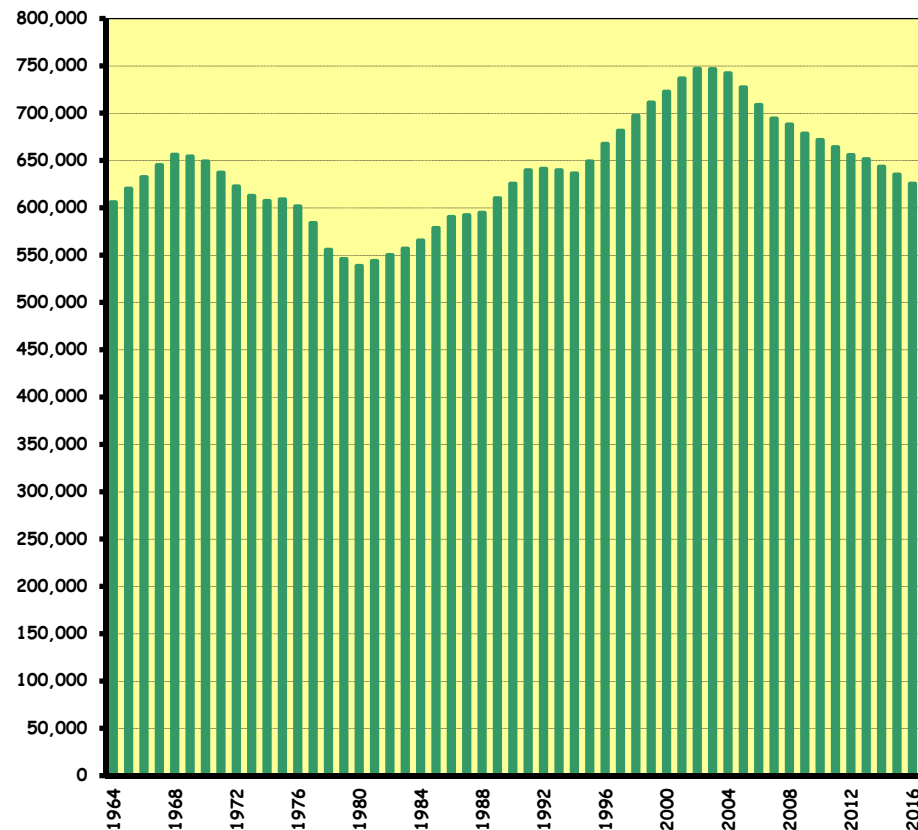
- ❑ Enrollment history
- ❑ Dynamics of enrollment change
- ❑ Projecting enrollment
- ❑ Enrollment forecasts
- ❑ Assessment of enrollment-impacted schools
- ❑ Looking forward



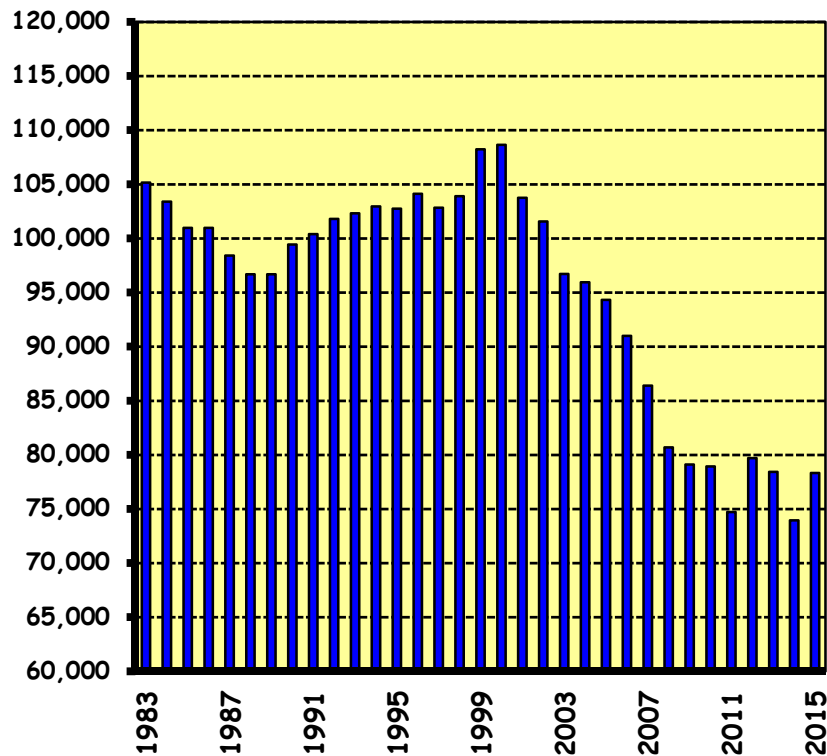
K-12 ENROLLMENT 1964-65 TO 2016-17



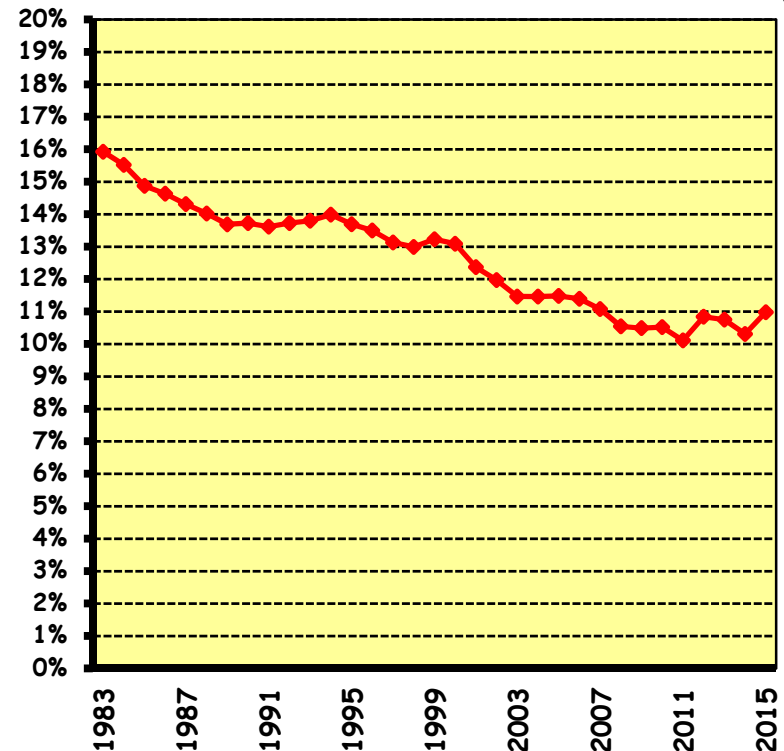
- ❑ Post WWII housing and baby boom > growth to 1968
- ❑ Growth in outer suburbs, Sylmar Earthquake, and concerns over forced desegregation > decline from 1968 to 1980
- ❑ Baby boom echo and post Prop 13 new housing > growth 1980 to 2002
 - Immigration reform > plateau 1986 and 1987
 - Civil unrest and Northridge Earthquake > plateau 1992 thru 1994
- ❑ Decline in births began 1990, K enrollment peaked in 1996



PRIVATE SCHOOL ENROLLMENT 1983-84 TO 2015-16



□ Increases/decreases similar to LAUSD's



□ Declining market share within LAUSD

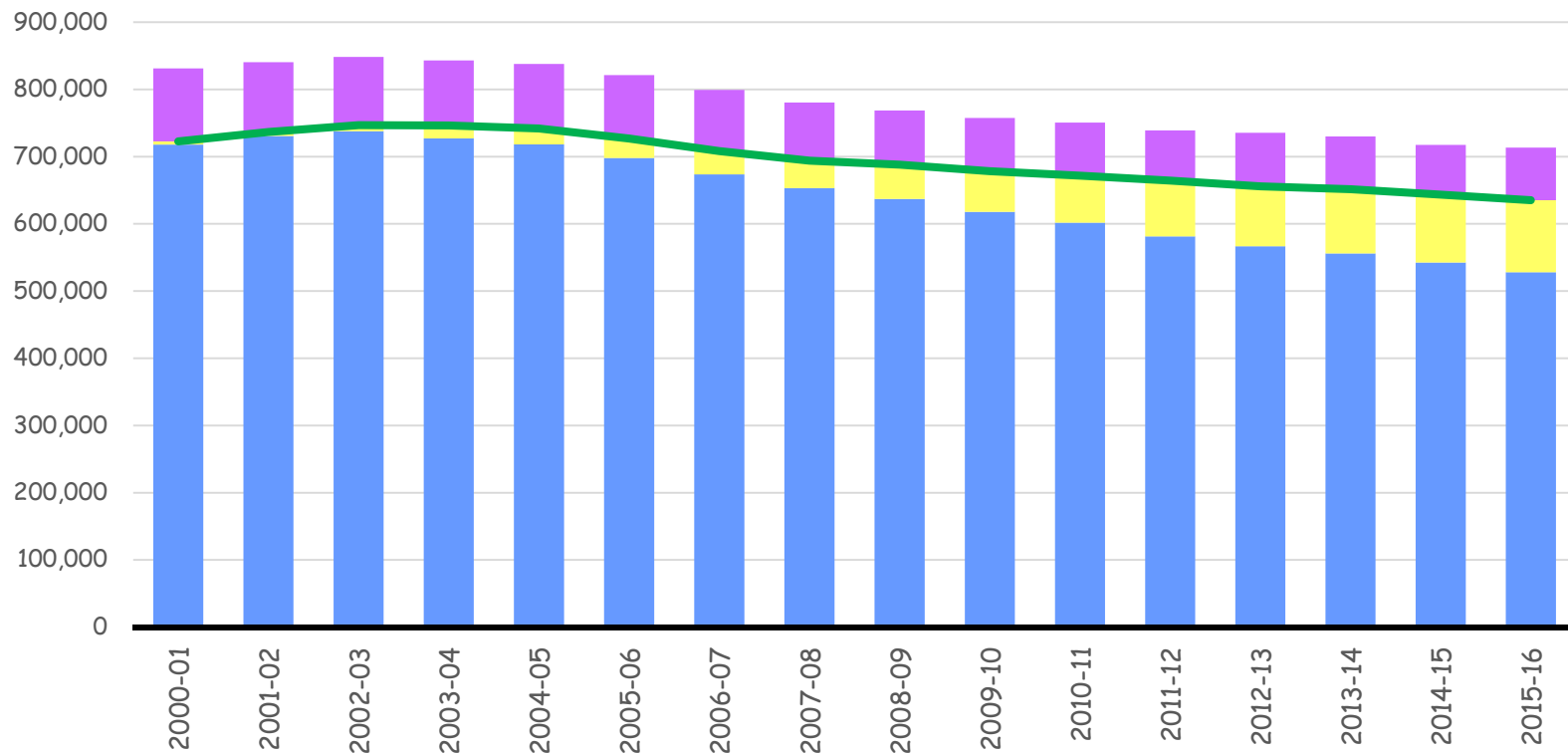
□ 529 schools in 2003; 426 schools in 2015



Source: California Department of Education, private school affidavits

March 2, 2017

ALL SCHOOLS ENROLLMENT WITHIN LAUSD BOUNDARY



- Private Schools
- Independent Charter Schools
- Traditional LAUSD and Affiliated Charter Schools
- Combined Total For Public Schools

March 2, 2017

DYNAMICS OF CHANGE

- ❑ **Incoming group**
 - Births in general population
 - Kindergarten in enrollment
- ❑ **Outgoing group**
 - Deaths in general population
 - 12th grade/graduates in enrollment
- ❑ **Incoming minus Outgoing = Natural Increase**
- ❑ **Fluctuation in core group = Net Change**
 - Difference of in/out migration in general population
 - Grade to grade retention in enrollment
- ❑ **Natural Increase + Net Change = Overall Change**



ENROLLMENT PROJECTIONS: ANALYSIS AND ASSUMPTIONS



❑ Births in LAUSD and LA County

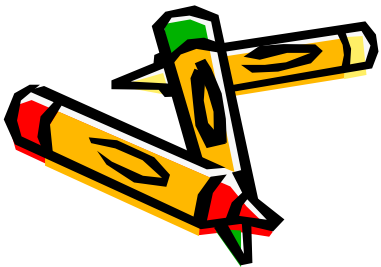
- Used to develop forecasts for Kindergarten and 1st Grade enrollment

❑ Cohort Survival Rates

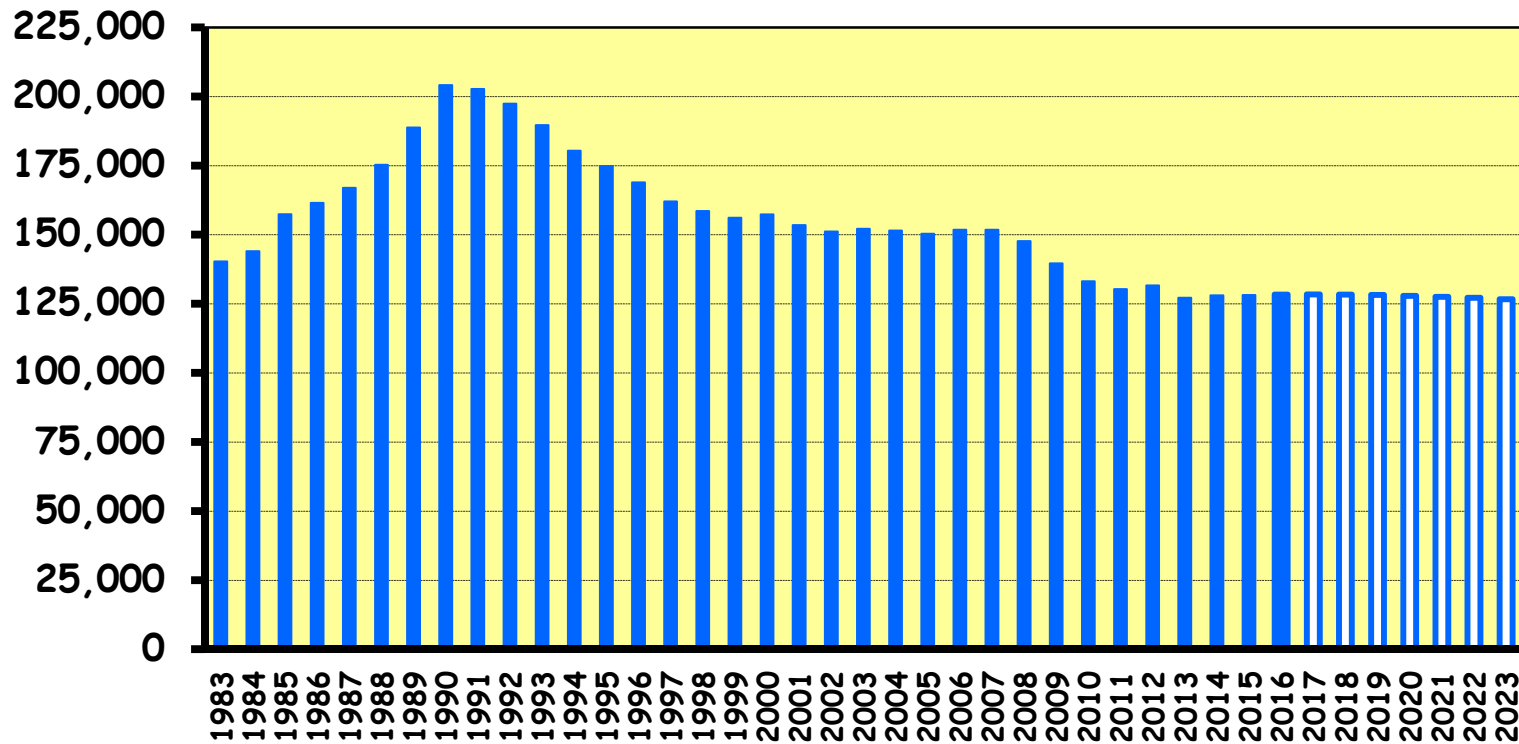
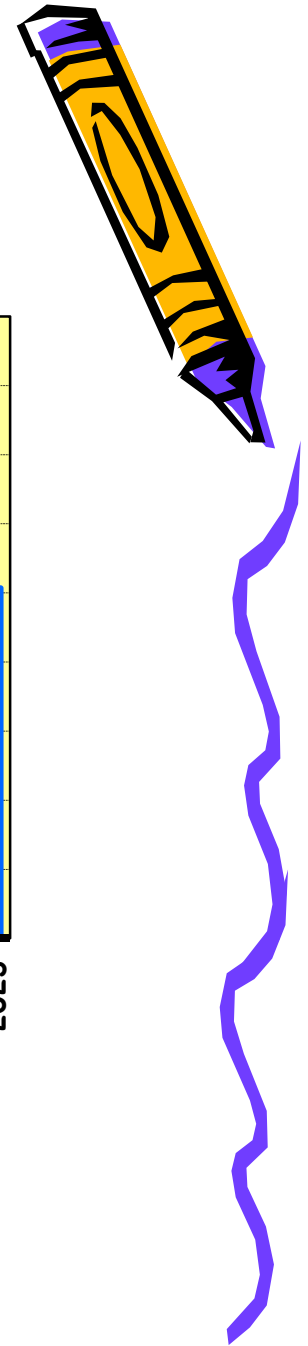
- Statistics showing the percentage of students who progress from one grade to another within LAUSD

❑ Factors considered in projection modeling

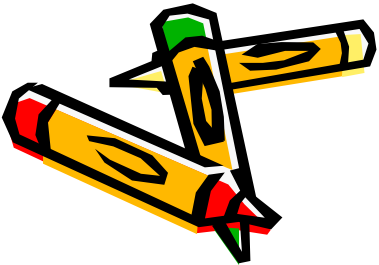
- Migration and immigration
- New housing development
- Ethnic shifts
- Health of the economy



BIRTHS IN LA COUNTY

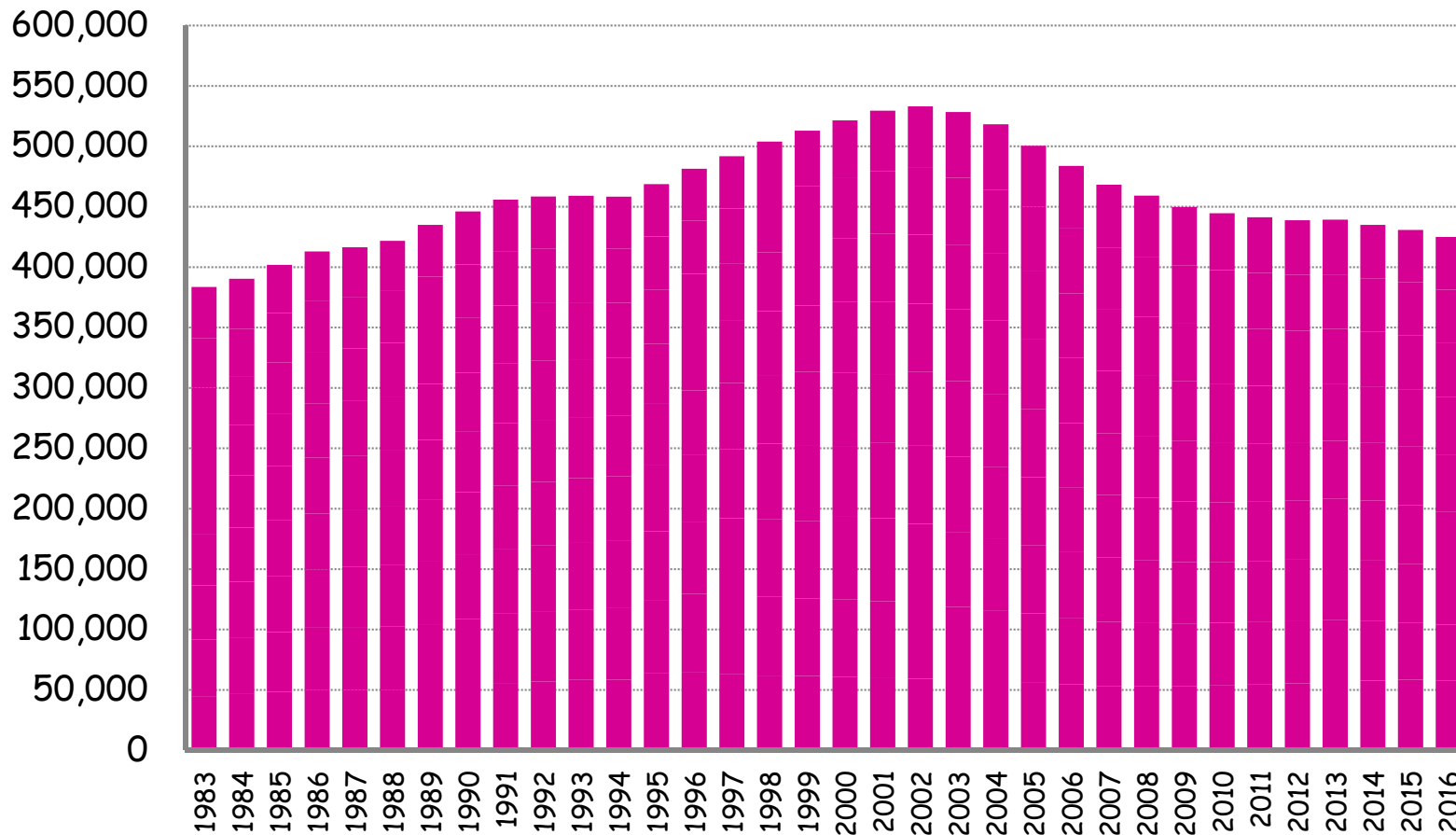
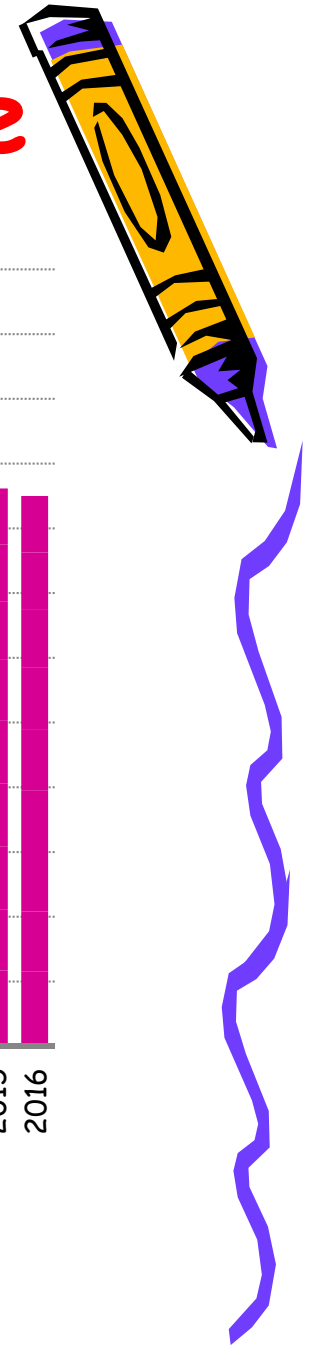


Sources: Actual births thru 2014, CA Dept. of Health Services, Ctr. for Health Statistics. Projected births: CA Dept of Finance, Demographic Research Unit.



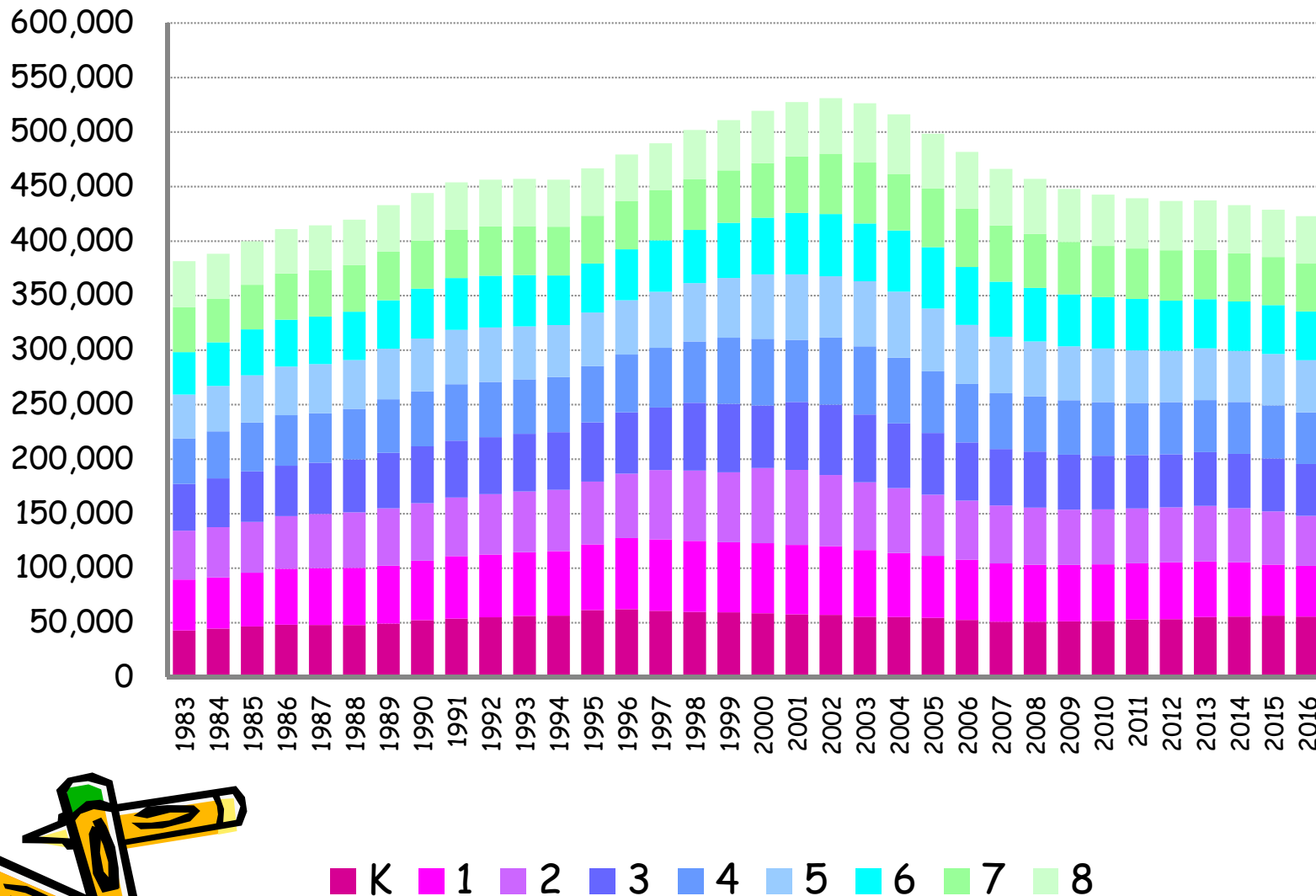
March 2, 2017

Overall K-8 Enrollment Change

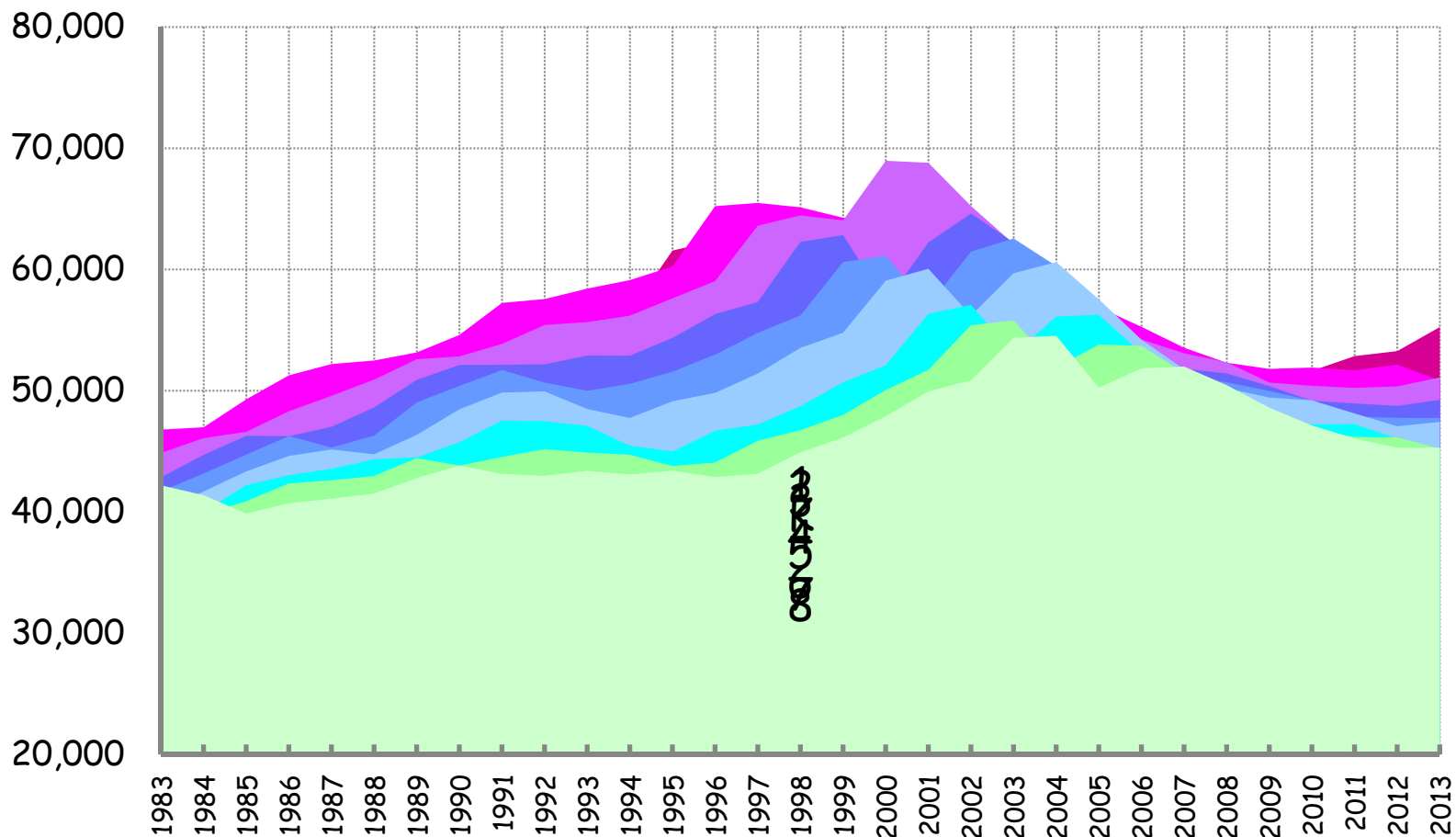


March 2, 2017

K-8 Enrollment Change by Grade



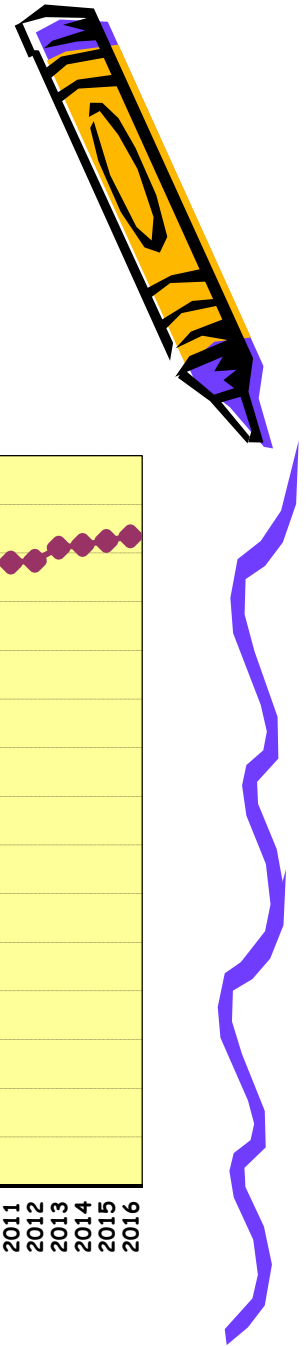
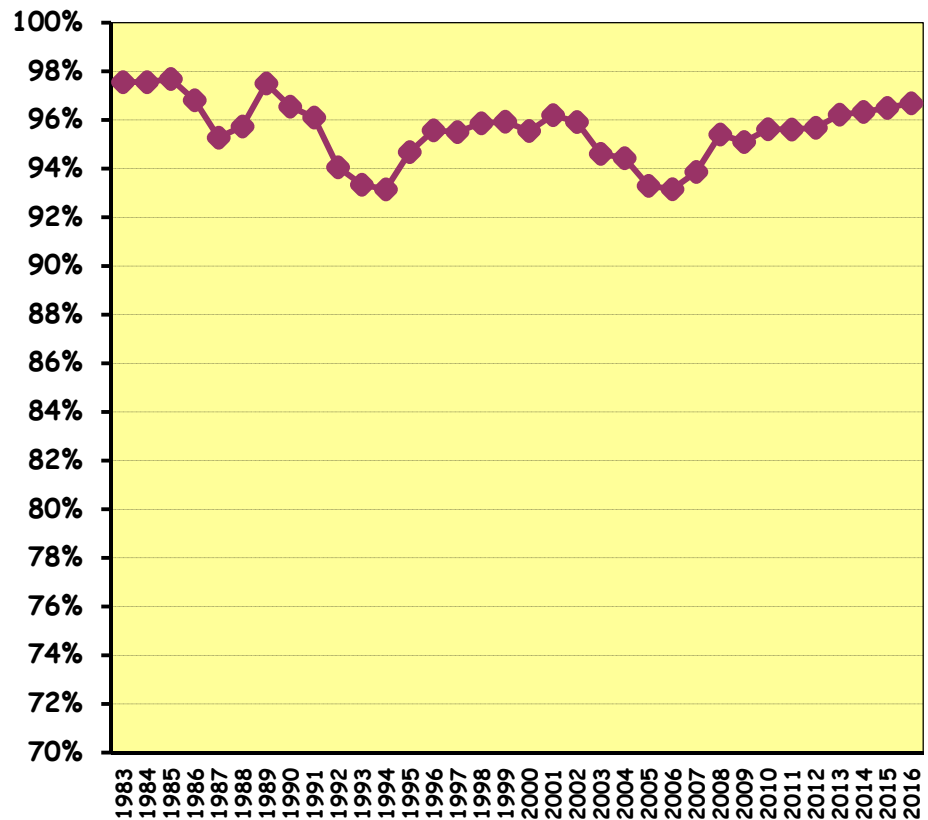
Enrollment Change by Grade



■ K
 ■ 1
 ■ 2
 ■ 3
 ■ 4
 ■ 5
 ■ 6
 ■ 7
 ■ 8

COHORT SURVIVAL RATES 1 YEAR CHANGE GRADES 1-11 TO 2-12

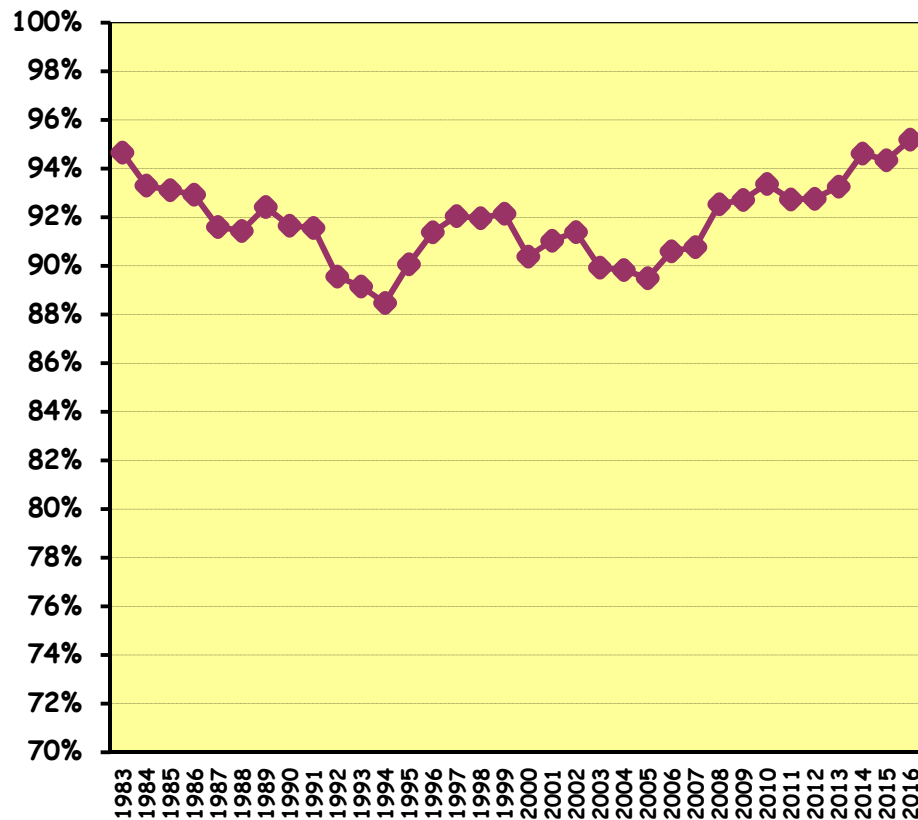
- ❑ Cohort Survival - the rate at which a defined group continues over time
- ❑ Graph shows a global rate for students that continued from one year to the next
- ❑ Ups and downs of rate mirror changes seen in enrollment graph



COHORT SURVIVAL RATES 1 YEAR CHANGE GRADES 8-11 TO 9-12



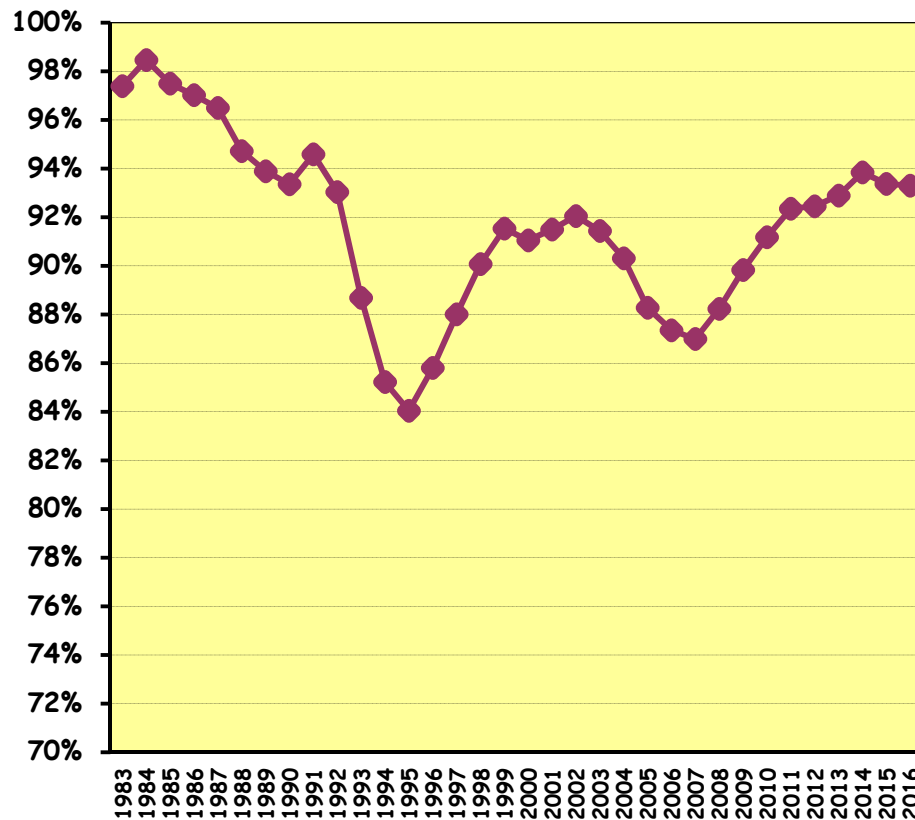
- Graph shows the rate at which 8th to 11th grade students continued in the following year as 9th to 12th grade students
- Changes in this rate are a reflection of changes in drop-out and migration trends



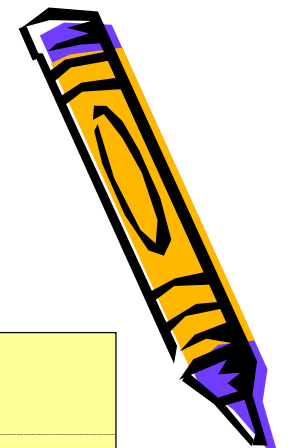
COHORT SURVIVAL RATES 4 YEAR CHANGE GRADES 5-8 TO 9-12



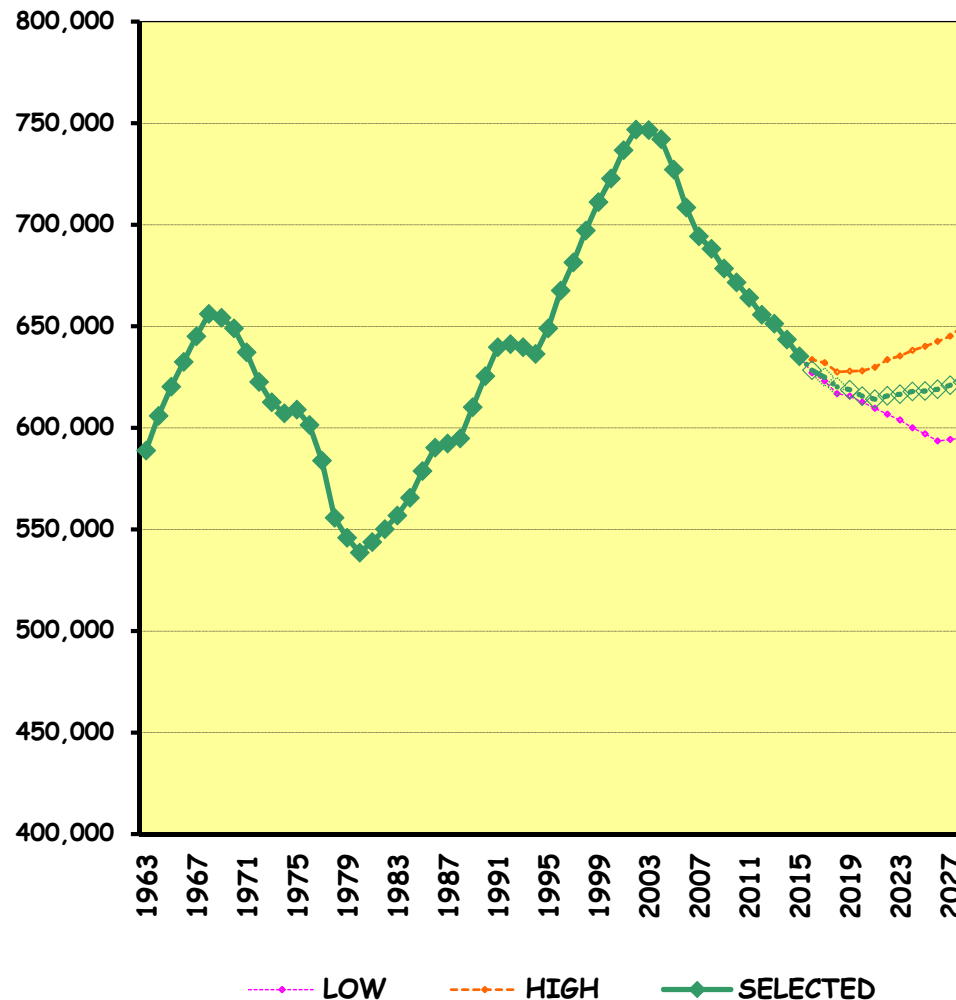
- Graph shows the rate at which 5th to 8th grade students continued to be enrollment as 9th to 12th grade students 4 years later
- Changes in this rate are a reflection of changes in drop-out rate, population motility, and timely fulfillment of grade level credits



ENROLLMENT PROJECTIONS

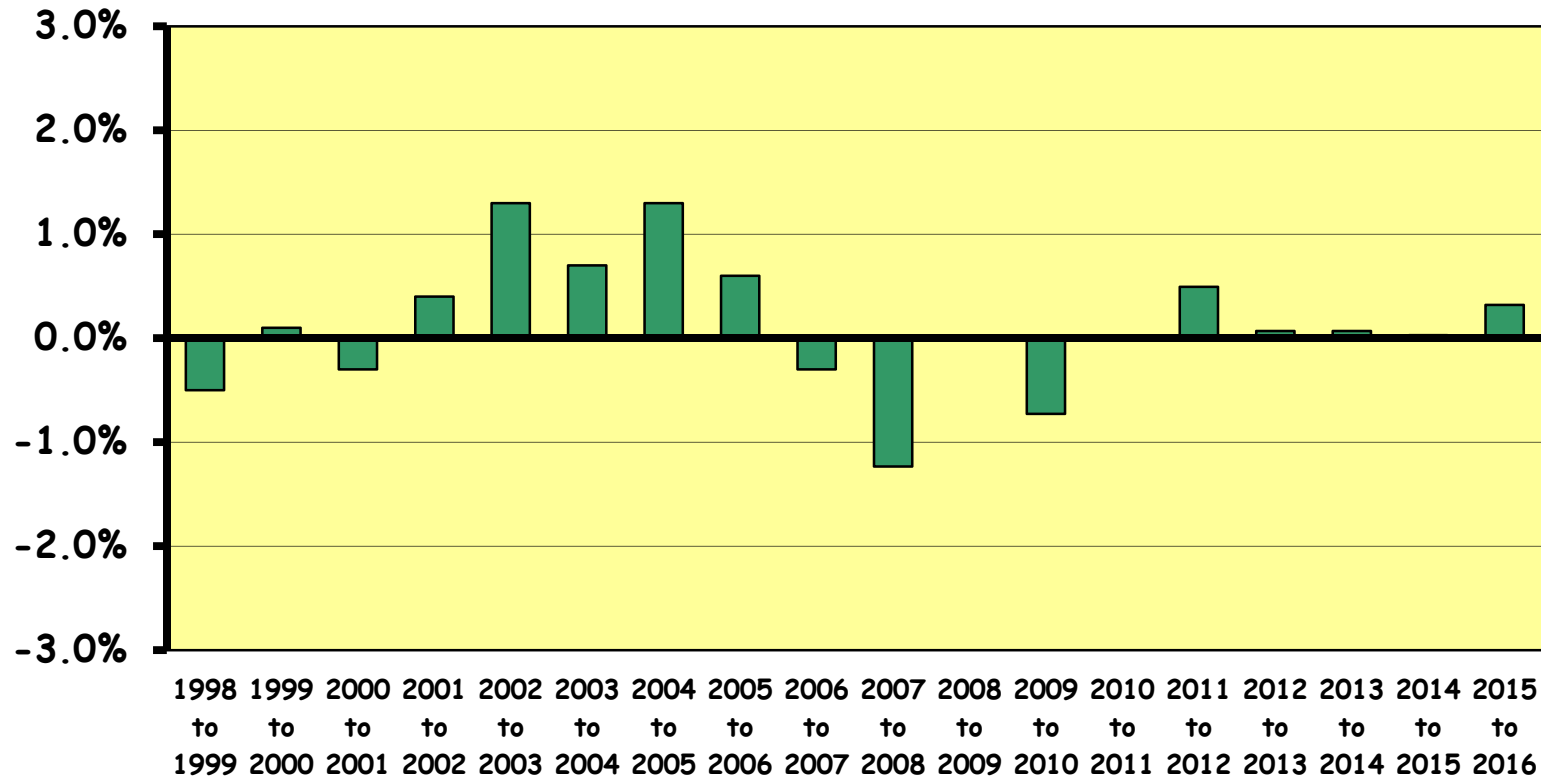


- ❑ Low, High, Selected -based on different assumptions applied to each grade's cohort rate
- ❑ Selected projection - likely outcome within a Low to High range
- ❑ Declining enrollment trend reversal expected
 - Low - 2025
 - High - 2019
 - Selected - 2022



March 2, 2017

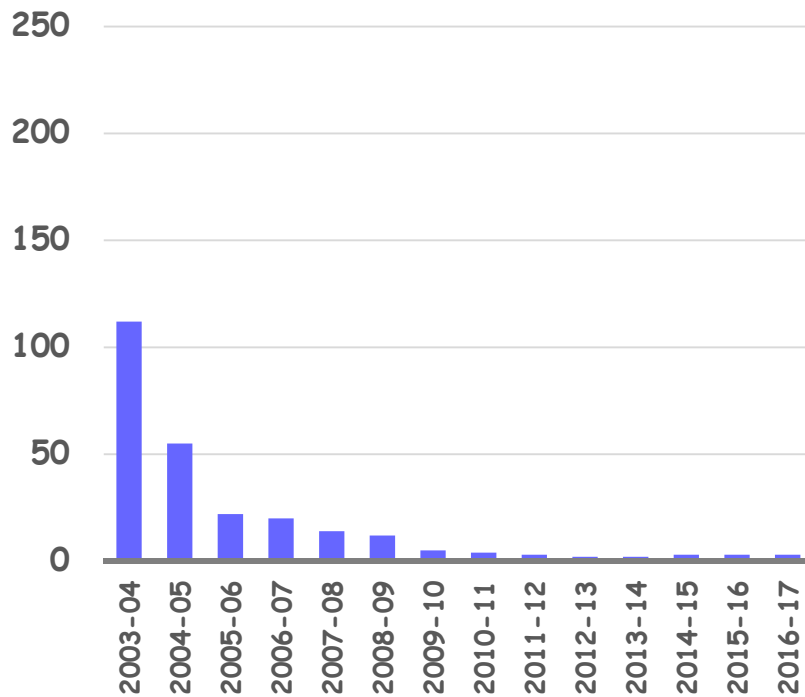
ACCURACY OF SHORT TERM K-12 PROJECTIONS



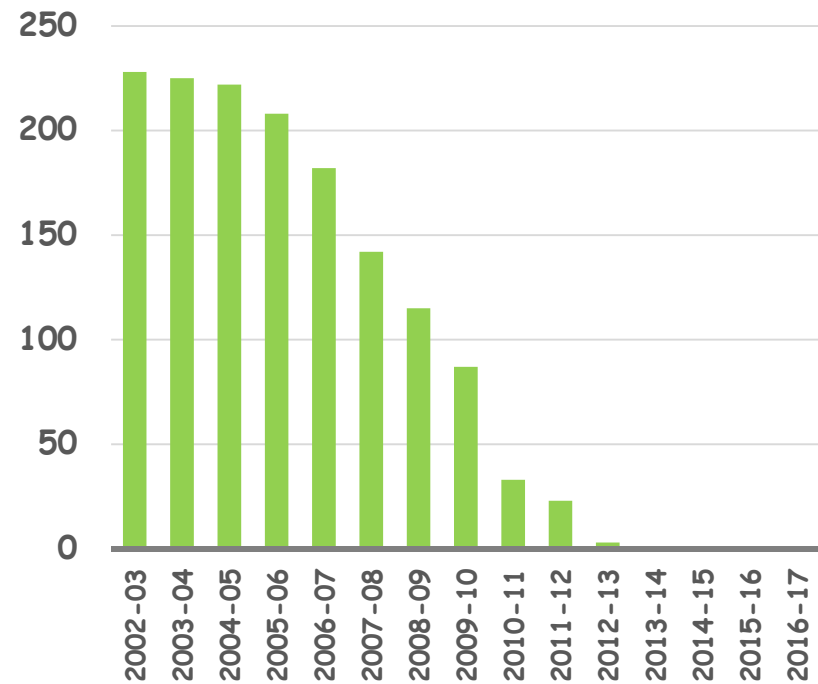
March 2, 2017

INVOLUNTARY BUSING AND MULTI-TRACK

Schools with
Involuntary Busing

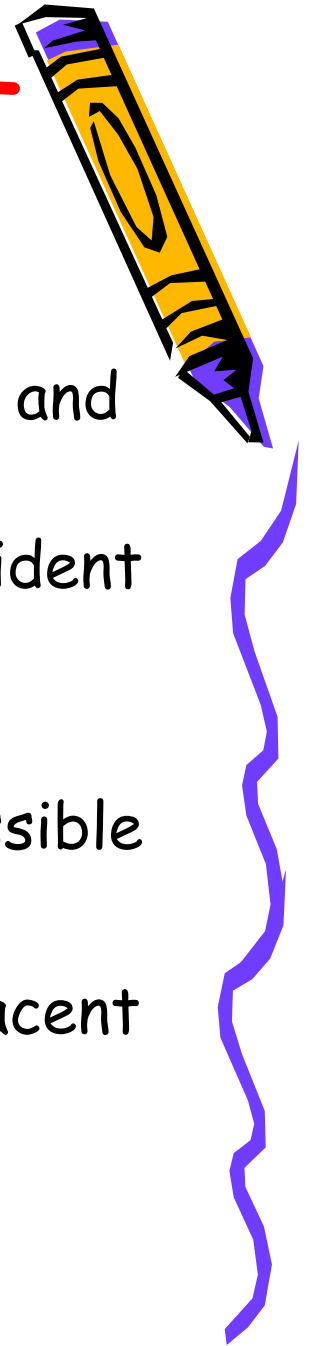


Schools with
Multi-track Calendar



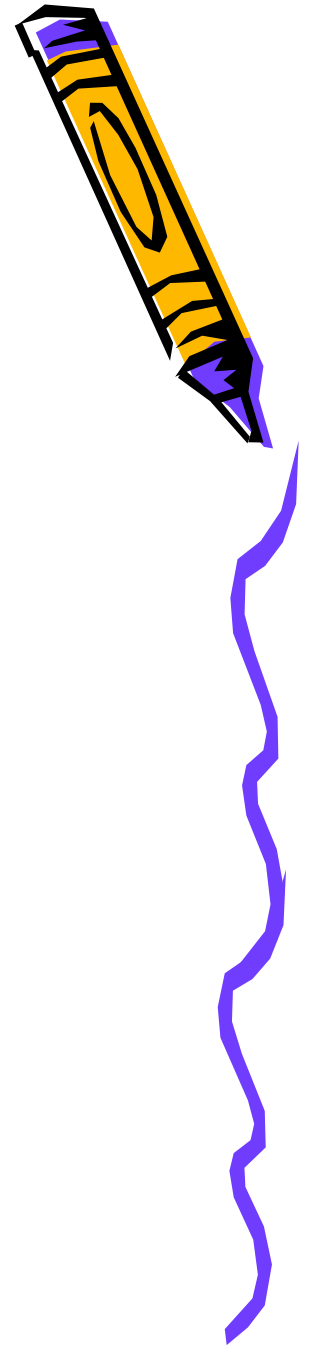
EVALUATION OF ENROLLMENT IMPACTED SCHOOLS

- ❑ Primary goal - accommodate resident students and avoid involuntary busing
- ❑ Assess cause for growth - resident vs non-resident
- ❑ Review classroom utilization and identify reasonable adjustments
- ❑ Control/reduce non-resident enrollment as possible
- ❑ Analyze resident enrollment trends
- ❑ Review options for boundary changes with adjacent school(s)

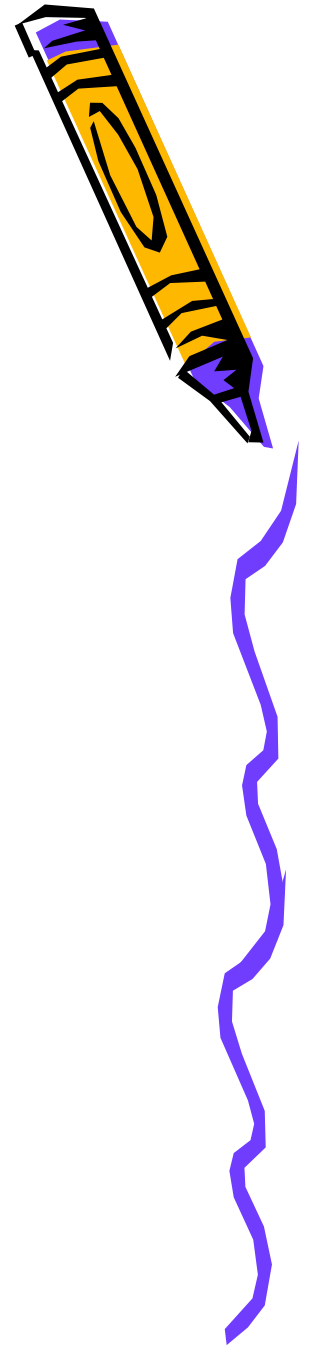


Looking Forward

- ❑ Sustainment of promise of single-track, neighborhood schools
- ❑ Modernization planning will include assessment of schools' abilities to meet enrollment demands



QUESTIONS AND DISCUSSION



March 2, 2017